

Overview of HIV/AIDS

in Houston/Harris County



HOUSTON HEALTH
DEPARTMENT

HIV Burden in Houston

Houston has the highest number of new HIV/AIDS cases in the state of Texas, with one out of every 200 local residents living with HIV. Additionally, in 2017 the Centers for Disease Control and Prevention (CDC) reported the Houston metropolitan statistical area (MSA) ranked **10th** in rate of new HIV diagnoses.

In an effort to support the Ending the HIV Epidemic Plan, the Houston Health Department leverages our resources to reduce and eventually end the number of new HIV cases in Houston.

Houston Health Department (HHD): The Role We Play to End HIV



Diagnose
HIV/STD Screening
HIV Testing
Partner Services



Treat
(Re)Linkage to Care
STD Treatment
Mobile Clinic

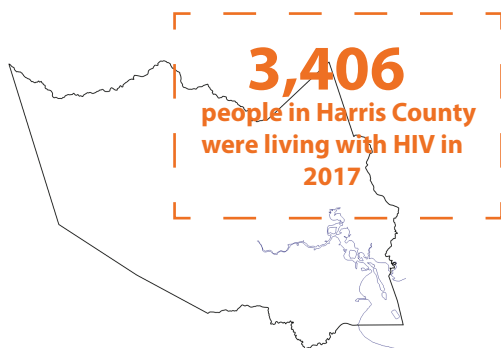
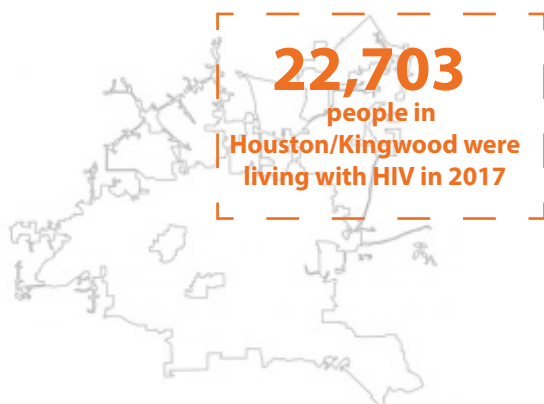
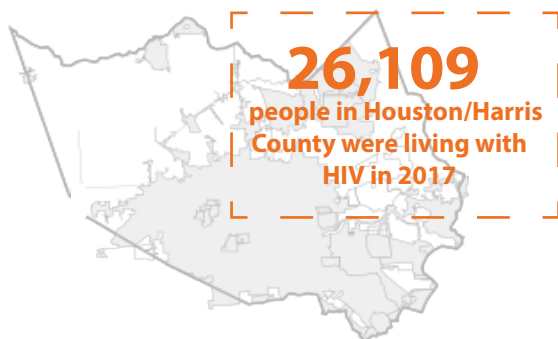


Prevent
Community Partnerships
HHD PrEP Clinics
PrEP Services



Respond
Molecular HIV
Surveillance
(MHS)

People Living with HIV (PLWH) - 2017



2018 New HIV Diagnoses in Houston/Harris County N = 1214



Race/Ethnicity

African American	45%
Hispanic/Latino	38%
White	12%
Multi/Unk/Other	5%



Age

0 - 24**	23%
25 - 34	38%
35 - 44	18%
45 - 54	14%
55+	8%



Transmission Risk

Male-to-male sexual activity (MSM)	68%
People who inject drugs (PWID)	5%
MSM/PWID	2%
Heterosexual contact	25%
Other	0%

**0-12 yrs and 13-24 yrs age groups are combined due to small number of cases.

2018 New HIV Diagnoses in Houston N = 1011



Race/Ethnicity

African American	48%
Hispanic/Latino	37%
White	10%
Multi/Unk/Other	5%



Age

0 - 24**	22%
25 - 34	38%
35 - 44	18%
45 - 54	13%
55+	8%



Transmission Risk

Male-to-male sexual activity (MSM)	68%
People who inject drugs (PWID)	5%
MSM/PWID	2%
Heterosexual contact	26%
Other	0%

2018 New HIV Diagnoses in Harris County N = 203



Race/Ethnicity

African American	33%
Hispanic/Latino	41%
White	21%
Multi/Unk/Other	5%



Age

0 - 24**	23%
25 - 34	33%
35 - 44	20%
45 - 54	16%
55+	8%



Transmission Risk

Male-to-male sexual activity (MSM)	69%
People who inject drugs (PWID)	4%
MSM/PWID	4%
Heterosexual contact	22%
Other	0%

Transforming our Department

- Decreased clinical services emphasis from primary care to disease prevention and control
- Enhanced ability to respond to emerging infectious diseases and disasters
- Increased focus on adolescent health and youth violence protection
- Increased focus on connecting individuals and families to healthcare, medical support services and insurance
- Building collaborative relationships and engaging the community
- Organizing and implementing large scale events
- Public health leadership at local, state and national levels

Our Accomplishments

- Routine HIV screening to over 110,000 people
- Activated incident command in response to several cases of measles/mumps in Houston and the surrounding areas resulting in the immunization hundreds of Houstonians.
- Began Hepatitis A immunization to prevent homeless outbreaks
- Direct observation of 28,170 doses of TB therapy – (95% completion rate) and obtained funding for video DOT for select clients
- Over 240,000 specimens tested for diagnosis of infectious disease in past year
- Obtained funding and partnered with local hospitals for monitoring of antibiotic resistance and surveillance of health-care acquired infections

Challenges & Opportunities

- CHALLENGES -

- Lack of policy encouraging routine HIV screening during well exams
- Over-reliance upon state and federal funds

- OPPORTUNITIES -

- Expand PrEP access in City of Houston STD clinics
- Expand DIS response to molecular clusters
- Expand HEARTS Team by recruiting and hiring personnel from key communities

STD Diagnoses in Houston/Harris County Among Key Populations,
5-Year Trends

	2013	2014	2015	2016	2017
Chlamydia	23,452	25,276	26,989	27,740	27,381
Among women	17,721	18,715	19,532	19,549	19,023
Among men	5,728	6,553	7,402	8,076	8,248
Among young adults (ages 15-24)	15,526	16,368	16,889	17,277	16,936
Gonorrhea	6,482	7,290	7,896	8,506	8,827
Among women	3,323	3,560	3,457	3,538	3,506
Among men	3,159	3,729	4,429	4,945	5,303
Among young adults (ages 15-24)	4,060	4,369	4,490	4,595	4,565
All Syphilis (excluding congenital)	1,667	2,016	2,265	2,464	2,714
Among women	410	444	463	442	480
Among men	1,257	1,572	1,802	2,022	2,223
Among adults (ages 25-34)	566	718	825	967	1,098
Primary and Secondary Syphilis	307	376	392	349	326
Among women	54	59	51	39	55
Among men	253	317	341	310	272
Among adults (ages 25-34)	119	131	155	151	144

